

070-7100 10mm Striker Pin



Designed as a companion part for use with single rotor latches that requires a 10mm (.394 in.) diameter striker pin and compliance to FMVSS 206 and ECE-11.

MATERIAL/FINISH:

- Typical materials include 212M36 (En8M) steel (or equivalent)
- Zinc and clear passivate

INSTALLATION:

- M12 x 1.0 thread—torque to 113 N-m (85 ft-lbs) minimum depending upon surface conditions

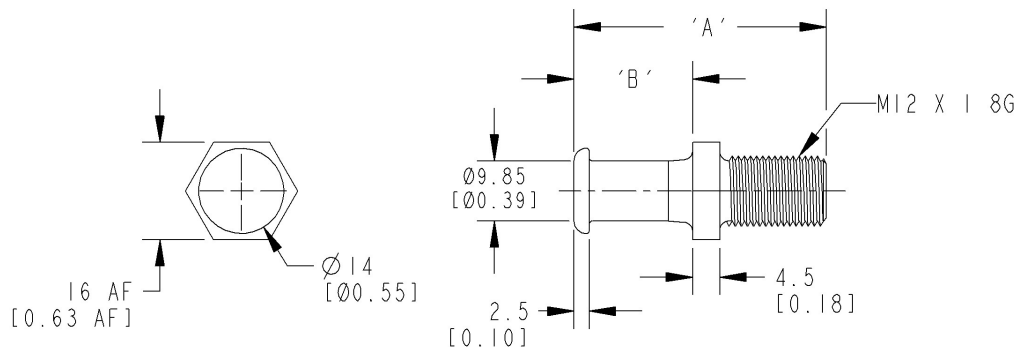
Note: 070-7100 10mm Striker Pin is designed and tested to meet or exceed FMVSS 206 and ECE-11 safety requirements only when used with TriMark's corresponding FMVSS 206 and ECE-11 compliant latches.

STRIKER INSTALLATION:

- Install striker pin in door frame
- Close door carefully and check for interference between head of striker pin and latch components
- Add or remove shims under striker pin as required (outside diameter of shim should be larger than outside diameter of striker pin)
- Adjust striker pin vertically so door is not guided upward or downward while being closed
- CHECK TO DETERMINE THAT BOTH SECONDARY AND PRIMARY LATCHING POSITIONS ARE USABLE
- Door should be latched but not "closed" in secondary position with respect to adjacent surfaces in primary position
- If both primary and secondary positions are not evident, readjust striker pin
- After installation, check door alignment and door seal pressures

PART NO.	DIM 'A'	DIM 'B'
4713	41.5 [1.64]	19.5 [0.77]
4722	49.0 [1.93]	19.5 [0.77]
4747	49.5 [1.95]	27.5 [1.08]
4756	60.0 [2.36]	35.0 [1.38]

All dimensions are for reference only. For more information visit www.trimarkcorp.com



TriMark Europe
 Cedar Court
 Walker Road
 Bardon Hill
 Coalville LE67 1TU
 United Kingdom
 Tel: +44(0)1530 512460
 Fax: +44(0)1530 512461
www.trimarkeu.com

TriMark Corporation
 500 Bailey Avenue
 P.O. Box 350
 New Hampton, IA 50659
 United States
 Tel: 641-394-3188
 Fax: 641-394-2392
 1-800-447-0343
www.trimarkcorp.com

TriMark Xuzhou
 Building A5 Jinwu Road
 Xuzhou Economic
 Development Zone
 Xuzhou, Jiangsu
 221004 PR China
 Tel: +86 516 8773 0018
 Fax: +86 516 8773 0058
www.trimarkcn.com